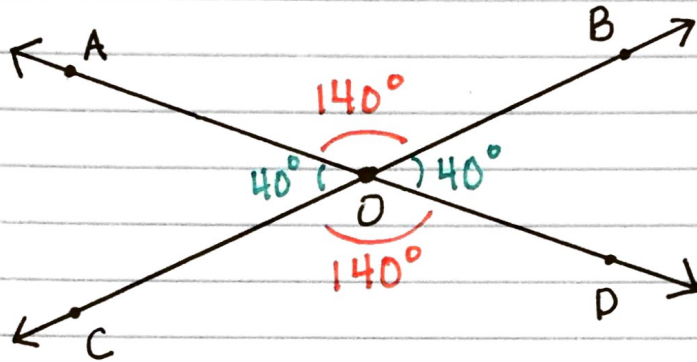


# Vertical Angles (Line Rotations)

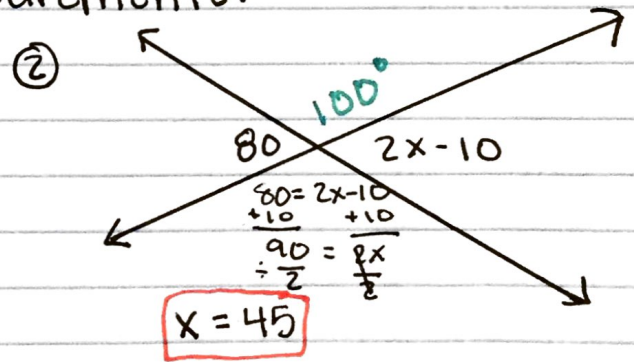
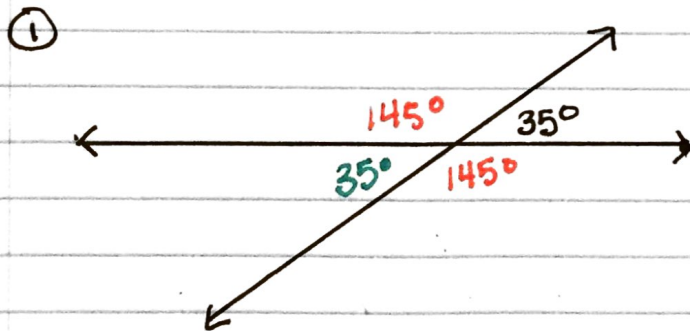
Vertical Angles are formed when two lines intersect at a point. They are located opposite one another at the intersection.



Vertical angles are congruent because they are supplementary to the same angle.

**\*TIP\*** Visualize supplementary angles to help find the angle measurements.

Find the missing angle measurements:



Points  $A'$ ,  $B'$ , and  $C'$  are the images of 180-degree rotations of  $A$ ,  $B$ , and  $C$ , respectively, around point  $O$ .

$\angle BOC' = 66^\circ$

$\angle AOB' = 79^\circ$

$\angle COB' = 66^\circ$

$\angle AOC = 35^\circ$

