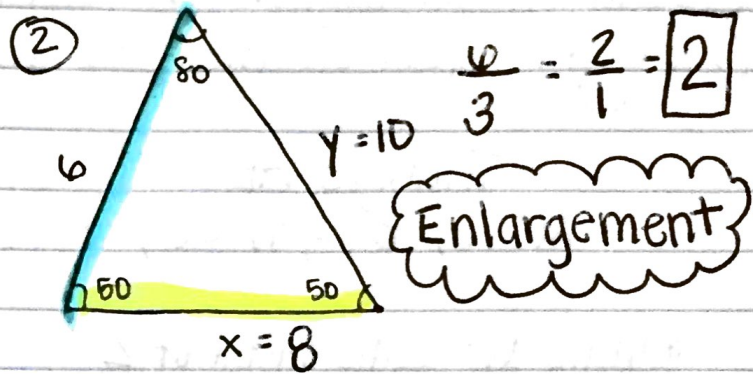
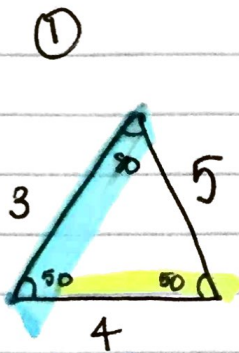


# Scale Factor Review

Ratio of the length of a side of one figure to its corresponding side in a similar figure.

A number that scales, or multiplies, some quantity

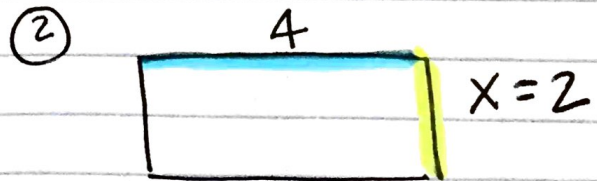
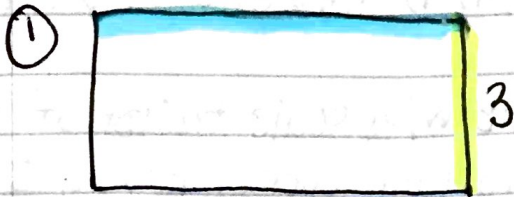


Make a Proportion

$$\frac{6}{3} = \frac{x}{4} = 8$$

$$\frac{6}{3} = \frac{y}{5} = 10$$

Find the missing side length. What is the scale factor?



$$x = 2$$

$$SF = \frac{4}{6} = \boxed{\frac{2}{3}}$$

$$\frac{6}{4} = \frac{3}{x} = 2$$

Reduction